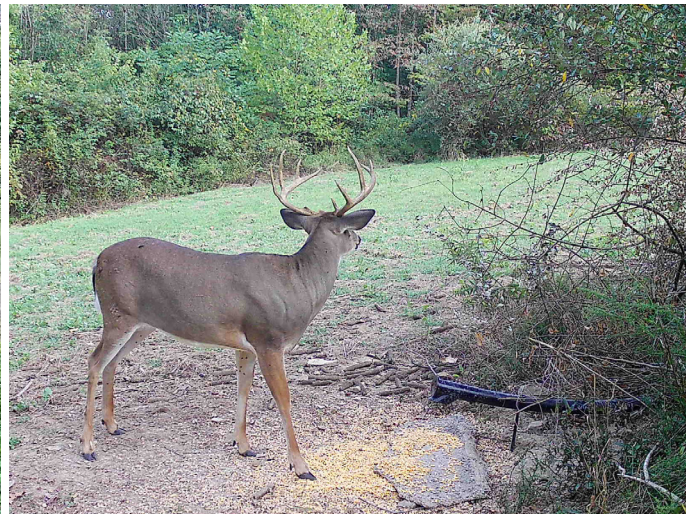


OWNERS MANUAL



SILO
THE INVISIBLE DEER FEEDER

**THANKS FOR CHOOSING
SILO DEER FEEDERS**

Call us with any questions!

330-674-4329

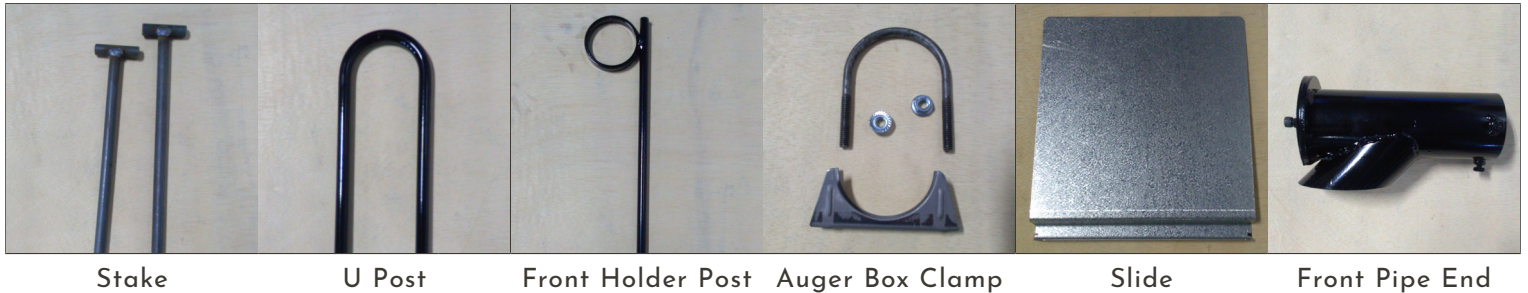
7700 State Route 241 | Millersburg OH 44654

Hours M-F 7 am - 5 pm Sat 7 am - 11 am

TOOLS REQUIRED for final assembly - installation

1 - 7/16" Wrench 1 - Hammer 1 - 1/2" Wrench 1 - 3/16" Allen Wrench (Provided) 2 - People

Capacity Standard 1200 lbs • Mega 2200 lbs



Stake

U Post

Front Holder Post

Auger Box Clamp

Slide

Front Pipe End

WARNING NEVER WORK ON AUGER WITH POWER SUPPLY CONNECTED TO BATTERY! FAILING TO DO SO COULD RESULT IN INJURY!

INSTALLING FEEDER: See opposite page and follow steps.

Leave included adjustable pliers in battery compartment in case you need it sometime later.

TIMER INSTRUCTIONS:

Timer will auger out 2½ lbs of corn per minute, may vary with mixed feeds.

To set clock: Press clock symbol and hold then press H+ and M+ button.

Programing Timer: Press (P) button once then should say 1 on, then press H+ and M+ to set "on" time. Then make sure all days are listed at top. Press and hold clock button then hit D+ button to change days. Then press (P) button again and it should say 1 off. Hit H+ and M+ to set your "off" time. Make sure all days are selected same as your 1 on setting was. Press clock button to return to home screen or if no button is hit for 10 seconds will do so by itself. If a second or third etc, feed time is desired repeat first steps by pressing the (P) button until it shows 2 on and 2 off. If timer is not on military time make sure you have your am and pm times correct when setting your on and off times. To remove a timed feed setting, set your "on" time and "off" time the same exact time and error will display and setting will disappear.

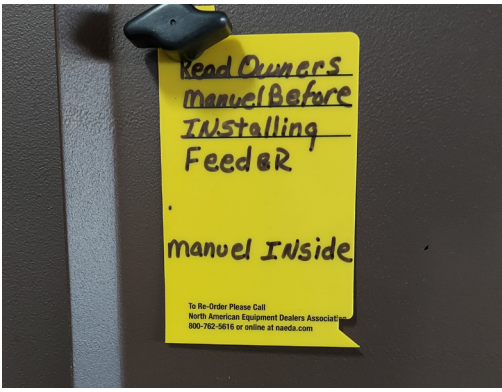
To Test Unit: Bypass timer by hitting top right Manual button, until bottom right on screen says "on". Hit manual button to turn "off" again. To set on "Auto" mode hit manual button until screen shows Auto in bottom right corner, unit will now feed corn at your desired settings.

SOLAR PANEL: Once feeder is installed, swivel and angle panel towards south. Caution performance may be affected when using lithium battery in sub zero temps.

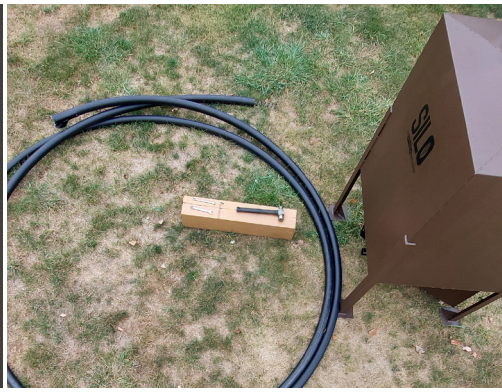
MAINTENANCE: Always use clean corn. Clean hopper and auger box once every year. If you ever need to open auger box side door with hopper full of corn, insert slide provided. Insert slide in slot inside battery compartment. If feeder is not used in spring remove timer until ready to use again. Make sure hopper is empty. For best results let feeder run year round even without corn to keep rodents away.

WARRANTY: 1 year

SERIAL # _____



STEP 1
Read Manual



STEP 2
Set hopper in desired place



STEP 3
Uncoil pipe



STEP 4
Slide front pipe holder post onto pipe and slide all the way to front



STEP 5
Open hopper side door



STEP 6
Remove allen bolt and clamp from shaft



STEP 7
Allen bolt with clamp removed



STEP 8
Insert auger into hopper end and pipe onto holder end



STEP 9
Slide pipe all the way onto end



STEP 10
Slide clamp onto auger and align clamp hole with shaft hole



STEP 11
Insert bolt through shaft into clamp and tighten with allen wrench



STEP 12
Close side hopper door



STEP 13
Clamp



STEP 14
Install clamp onto pipe and hopper end



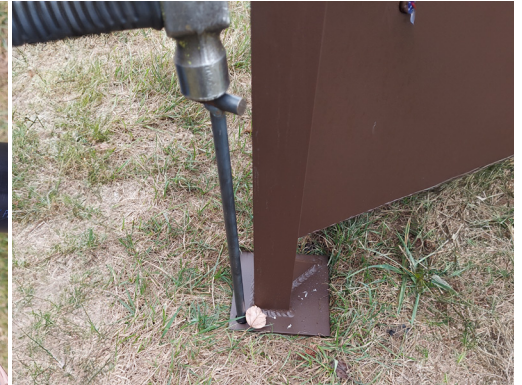
STEP 15
Straighten pipe and install U post halfway between hopper and front end of pipe



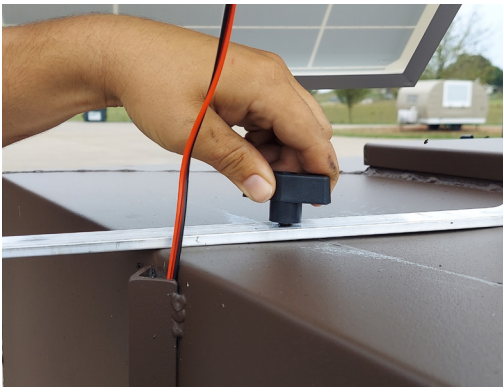
STEP 16
Install front end holder post 12" back from front and make so pipe is 12" to 16" off ground



STEP 17
Loosen the two 1/4" bolts with your 7/16" wrench and turn front end so corn will drop out of bottom and then retighten bolts



STEP 18
Install 2 ground stakes in hopper base



STEP 19
Adjust solar panel to face south

STEP 20
You are now ready to brush in front pipe area to conceal as good as possible. If you want your corn off ground use angled stone and add a bag of sackrete around it.